

DATABASE ON THE CHARACTERISTICS OF PALM OIL-BASED PRODUCTS

NOOR LIDA HABI MAT DIAN; MISKANDAR MAT SAHRI; NOR AINI IDRIS and WAN ROSNANI AWG ISA

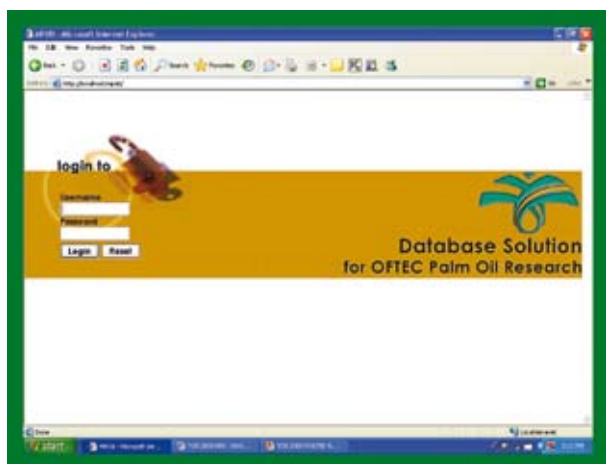


MPOB INFORMATION SERIES • ISSN 1511-7871 • JUNE 2009

MPOB TS No. 70

A database is the answer to all the hassle associated with manual methods of data storage. A database reduces data redundancy, entry and storage, updating errors and retrieval cost. It increases data consistency and improves data integrity and security. Information from a database is easily retrievable and simultaneously accessible to multiple users.

A database on the characteristics of palm oil-based products gathers together important physico-chemical characteristics of palm oil and palm kernel oil, and their fractions, *i.e.* palm olein and palm stearin of various iodine values, palm kernel olein, palm kernel stearin and palm mid-fraction of various iodine values. Characteristics of oil and fat blends containing palm-based products are also included in this database.



PRODUCT DESCRIPTION

This database contains data on the important characteristics, *e.g.* fatty acid composition (FAC) and triacylglycerol (TAG) composition, solid fat content (SFC), slip melting point and iodine

values of palm-based oils and those of their fractions and blends. Data on palm oil-based product characteristics are recorded, updated and maintained electronically and systematically using a user-friendly database interface.

An analysis module is one of the key features of the database. Calculations, such as percentages of FAC, TAG and SFC, and ratios of SAFA:MUFA:PUFA (where SAFA refers to saturated, MUFA to monounsaturated and PUFA to polyunsaturated fatty acids) and SSS:SUS:UUU TAGs (where SSS refers to trisaturated, SUS to disaturated-monounsaturated and UUU to triunsaturated), can be performed effortlessly.

Different types of reports and charts or graphs (*e.g.* SFC profile graph and ratio of SAFA:MUFA:PUFA) can be generated from the data and analyses performed. The data and report can also be printed or exported to other file formats, *e.g.* MS Excel or PDF.

The database is equipped with security features, such as an audit trail that logs the user's activity, to protect data integrity. Only registered users are allowed to access the system.

By putting the database on a local network, the system is accessible to multiple users simultaneously. Once the network is connected to the Internet, the database system is accessible from any part of the world where Internet connection exists.

HOW WOULD CUSTOMERS ACCESS THE DATABASE?

The database is accessible online via the Internet. Users can request for access to the database by registering through the online database system.

ISSN 1511-7871



9 771511 787001

Malaysian Palm Oil Board, Ministry of Plantation Industries and Commodities, Malaysia

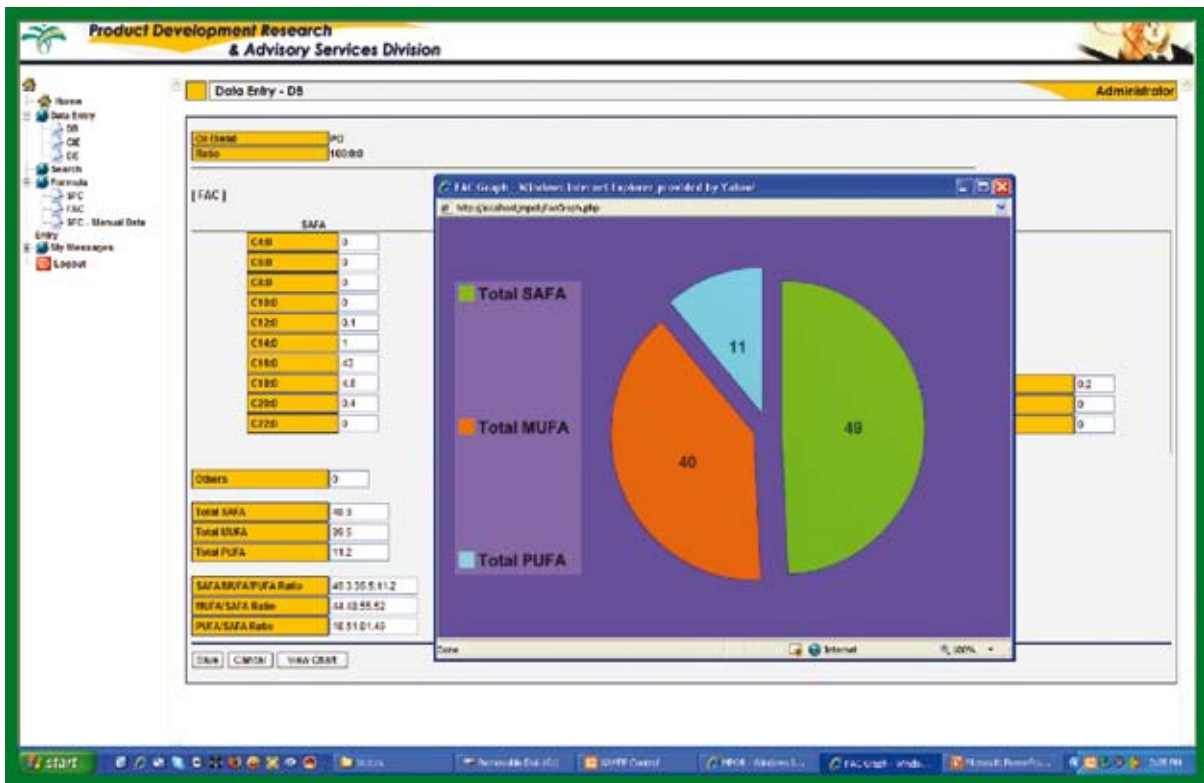
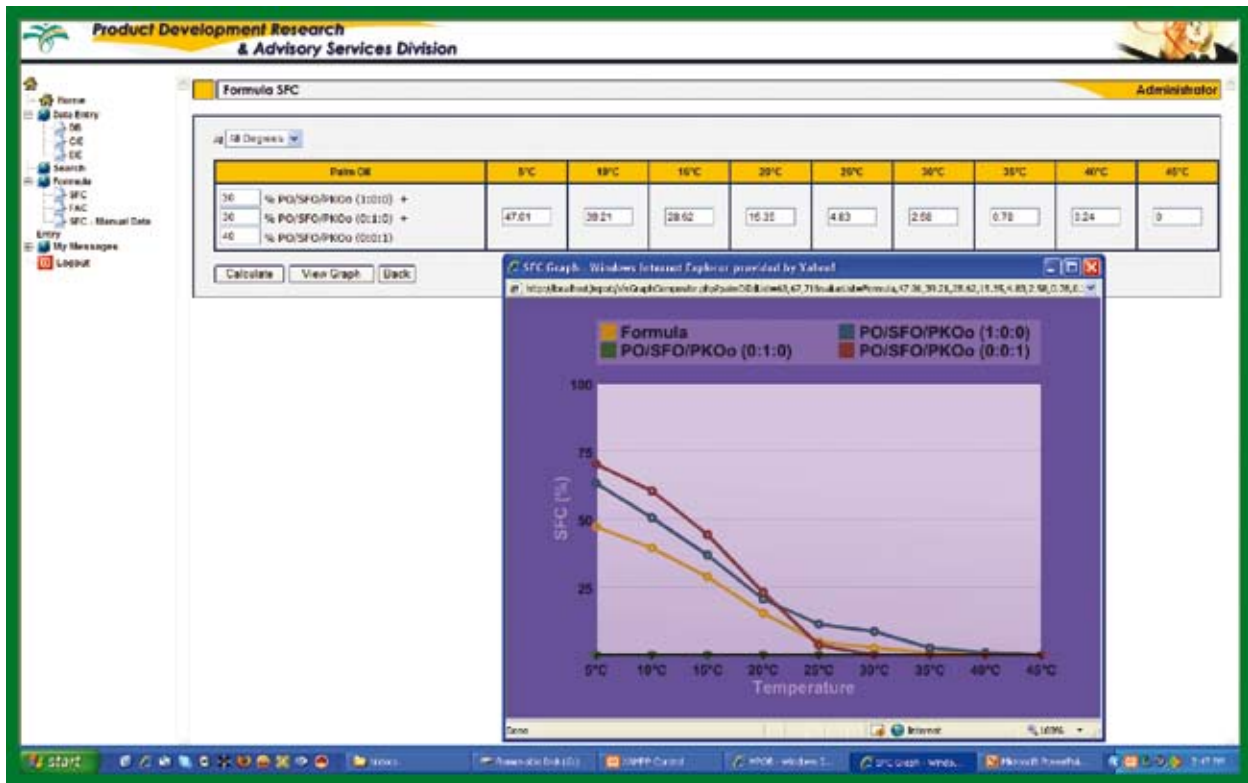
P. O. Box 10620, 50720 Kuala Lumpur, Malaysia. Tel: 03-87694400

Website: www.mpob.gov.my

Telefax: 03-89259446



MPOB



For more information kindly contact:

Director-General
MPOB
P. O. Box 10620
50720 Kuala Lumpur, Malaysia.
Tel: 03-87694400
Website: www.mpob.gov.my
Telefax: 03-89259446